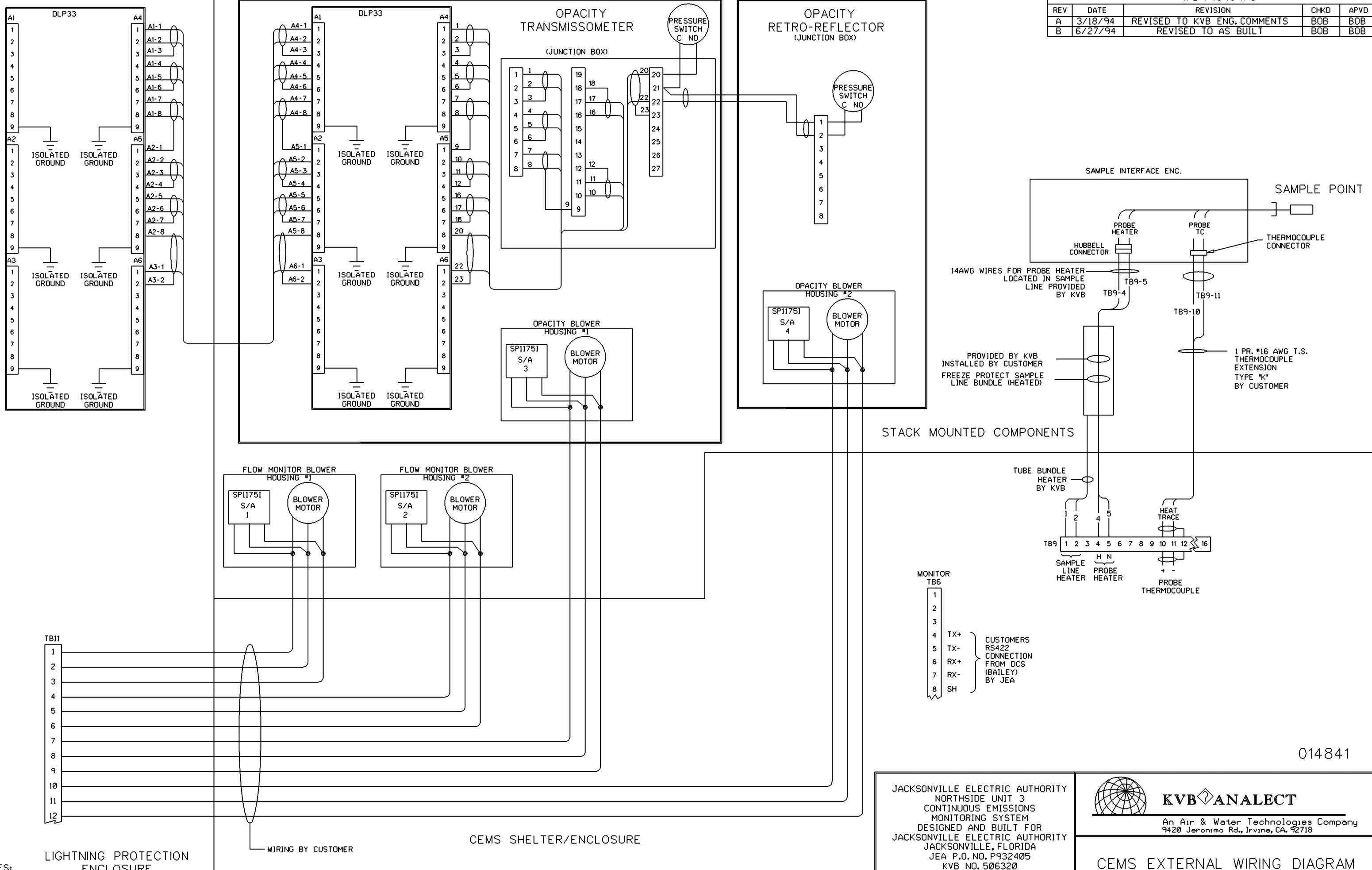


R E V I S I O N S				
REV	DATE	REVISION	CHKD	APVD
A	3/18/94	REVISED TO KVB ENG. COMMENTS	BOB	BOB
B	6/27/94	REVISED TO AS BUILT	BOB	BOB



NOTES: BOTH THIS DRAWING AND THE INFORMATION IN IT ARE PROPRIETARY AND THE PROPERTY OF KVB/ANALECT AND MAY NOT BE USED FOR THE DESIGN, PRODUCTION, INSTALLATION OR OPERATION OF APPARATUS OR PROCESSES EXCEPT UNDER CONTRACT WITH KVB/ANALECT.

E L E C T R I C A L   S P E C I F I C A T I O N S					
CONTROL WIRE:		SIGNAL WIRE:		POWER WIRE:	
INS. TEFZEL	SIZE 16 AWG. MIN.	INS. PVC	SIZE 18 2 COND SH.	INS. THHN	SIZE AS REQUIRED
LUGS FORK	MISC COLOR & NO.	LUGS FORK	MISC NO.	LUGS FORK	MISC COLOR & NO.

JACKSONVILLE ELECTRIC AUTHORITY  
NORTHSIDE UNIT 3  
CONTINUOUS EMISSIONS  
MONITORING SYSTEM  
DESIGNED AND BUILT FOR  
JACKSONVILLE ELECTRIC AUTHORITY  
JACKSONVILLE, FLORIDA  
JEA P.O. NO. P932405  
KVB NO. 506320



**KVB ANALECT**  
An Air & Water Technologies Company  
9420 Jeronimo Rd., Irvine, CA. 92718

CEMS EXTERNAL WIRING DIAGRAM					
DWN	LVN	DATE 11/15/93	50632B05		
CHKD	BOB	DATE 6/27/94			
APVD	BOB	DATE 6/27/94	SCALE N/A	SHT: 1 OF 1	

014841